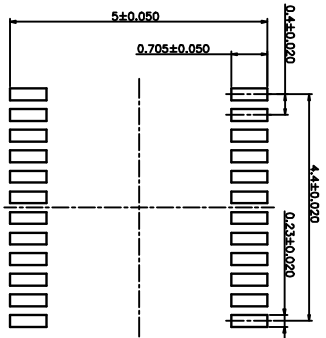
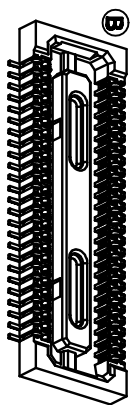
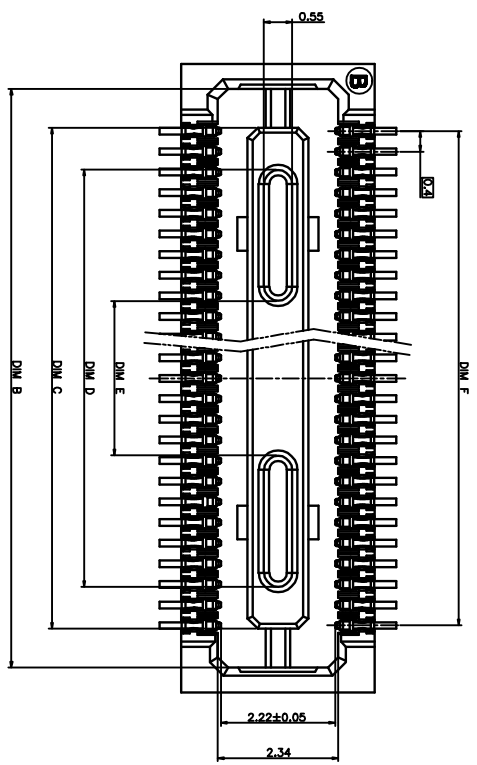


| REV | EGR. NO. | DESCRIPTION | DATE | APPD. |
|-----|------------|--------------|------------|-------|
| A | NEW | NEW | 2011.03.17 | 陈林林 |
| B | FEN1400X10 | 为改善插拔寿命或零件引脚 | 2014.03.22 | 陈林林 |



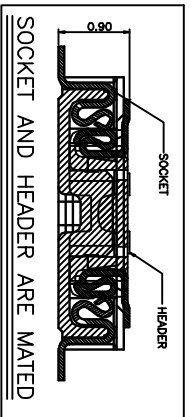
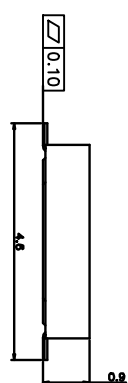
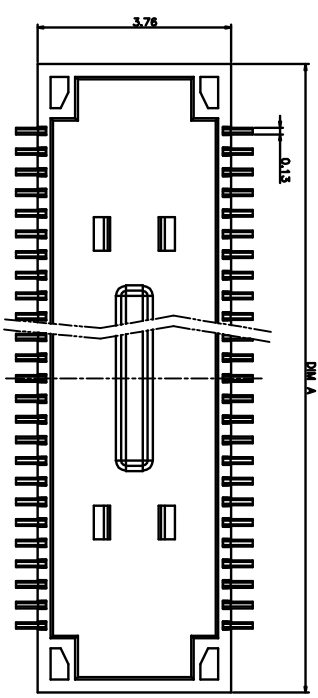
RECOMMENDED PCB LAYOUT
TOP VIEW (TOLERANCE:±0.05)

说明:
NOTE:

1. 塑胶材料: 热塑性塑胶, 颜色: 黑色;
HOUSING MATERIAL: THERMOPLASTIC, COLOR: BLACK;
2. 端子材料: 铜合金, 接触区镀金3u', 焊锡区镀金1u';
CONTACT MATERIAL: COPPER ALLOY;
3u" MIN. GOLD PLATED ON AT CONTACT AREA;
1u" MIN. GOLD PLATED ON AT SOLDER TAIL AREA;
3. 产品性能:
PERFORMANCE:
- 4.1. 接触阻抗: 80mΩ Max.
CONTACT RESISTANCE: 80mΩ Max.
- 4.2. 耐电压: 100V AC, 1 Minute;
DIELECTRIC WITHSTANDING VOLTAGE: 100V AC FOR 1MINUTE;
- 4.3. 绝缘阻抗: 100MΩ Min.
INSULATION RESISTANCE: 100MOHM Min.
- 4.4. 插拔耐久: 50次 Min.
DURABILITY: 50 CYCLES Min.

产品系列表

| Pin No. | P/N | DIM A | DIM B | DIM C | DIM D | DIM E | DIM F |
|---------|-----------------|-------|-------|-------|-------|-------|-------|
| 60 | 5.016A0-060-1R0 | 14.20 | 13.24 | 11.73 | 10.10 | 3.40 | 11.60 |
| 50 | 5.016A0-050-1R0 | 12.20 | 11.24 | 9.73 | 8.10 | 3.00 | 9.60 |
| 40 | 5.016A0-040-1R0 | 10.20 | 9.24 | 7.73 | 6.10 | 2.60 | 7.60 |
| 30 | 5.016A0-030-1R0 | 8.20 | 7.24 | 5.73 | 4.10 | 2.20 | 5.60 |
| 24 | 5.016A0-024-1R0 | 7.00 | 6.04 | 4.53 | 3.00 | 2.00 | 4.40 |



SOCKET AND HEADER ARE MATED

| | | | | | |
|-------------------|---------------------|----------|--------------------------------------|--------|-----------------|
| EXTEND USE | 0.4 BTB 0.9H F-CONN | TITLE | 0.4 BTB 0.9H F-CONN CUSTOMER DRAWING | DWG NO | C-5016A0 |
| GENERAL TOLERANCE | Ⓜ | UNIT | mm | P/N: | 5.016A0-0**-1R0 |
| GENERAL TOLERANCE | Ⓜ | MATERIAL | APPD | SHEET | 1/1 |
| GENERAL TOLERANCE | Ⓜ | FINISHED | DRN | SCALE | 1:1 |
| GENERAL TOLERANCE | Ⓜ | FINISHED | DRN | SCALE | 1:1 |

